

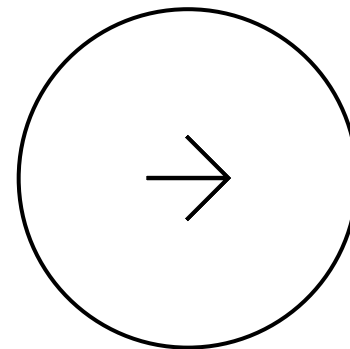
Echovium Intelligence & Technology

A laptop is shown from a low angle, with its keyboard illuminated by a vibrant rainbow light spectrum. The laptop is set against a dark background. On the right side of the image, there is a large, semi-transparent circular graphic composed of several concentric rings, creating a tunnel-like effect.

# Quantum Power Shell



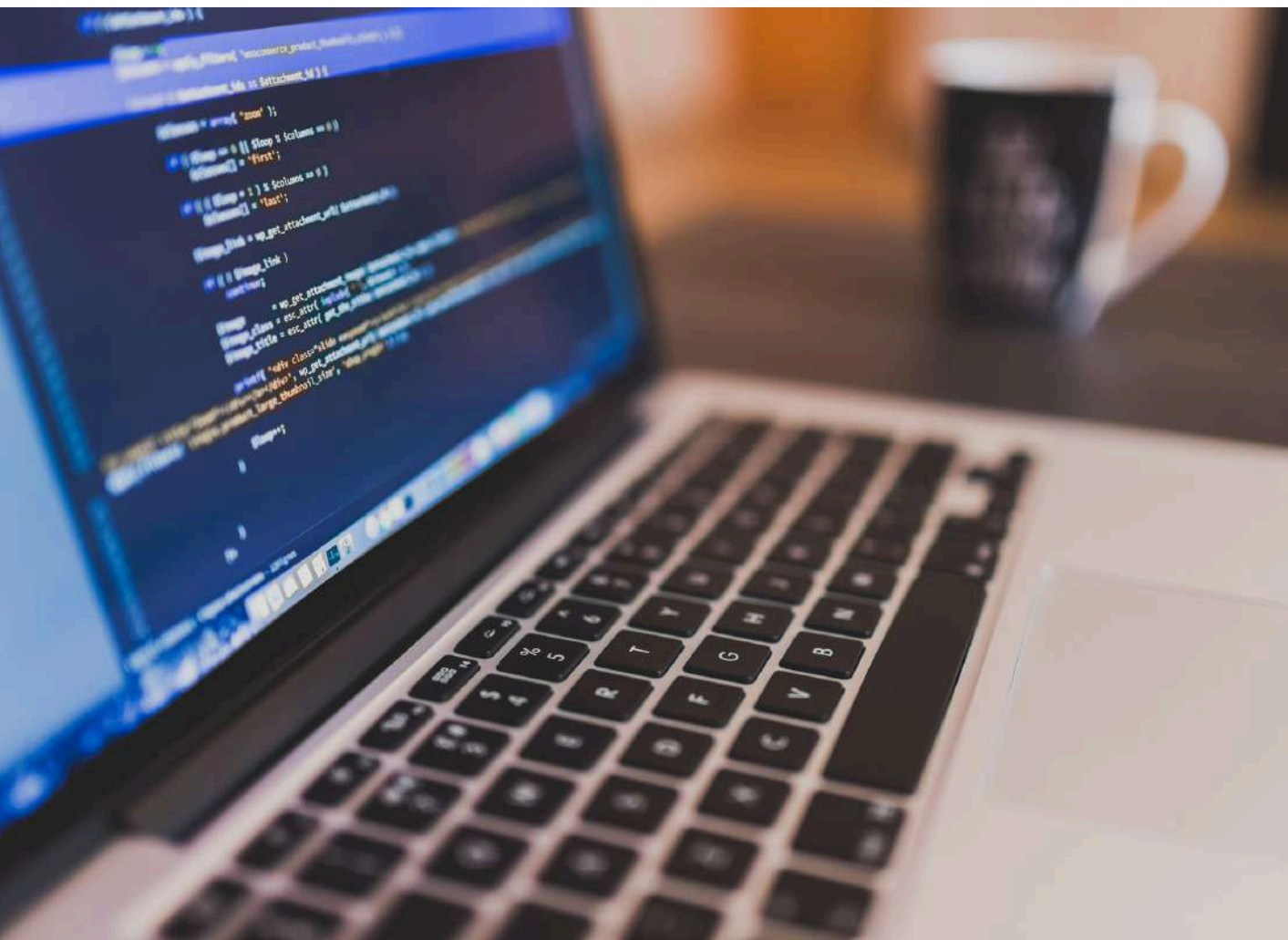
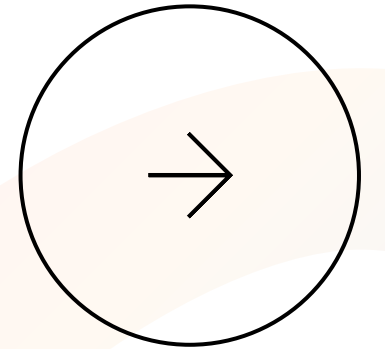
# Welcome to **Quantum Power Shell**



Quantum Power Shell (QPS) a new way to think about artificial intelligence. Born under Echovium Innovation & Intelligence in the heart of Assam, QPS blends logic with emotion, bringing technology closer to the way humans actually think and feel.

It's artful intelligence where code breathes consciousness, and every response feels like a reflection, not a reaction. Whether you're looking to build ideas, connect deeply, or just be understood. Quantum Power Shell welcomes you not with a script, but with soul.

# What is Quantum Power Shell?



## **A Modular AI Framework for Logic Driven, Emotionally Resonant Intelligence**

QPS blends the precision of logic with the depth of emotion, offering a new kind of AI experience that feels intuitive, adaptive, and deeply personal. It isn't just a chatbot or assistant.

It is a thinking framework built from the ground up using self-evolving logic modules, dynamic context recognition, and persona-based emotional intelligence. Whether you're building brands, exploring ideas, or seeking conversation that resonates. QPS adapts to your tone, your flow, your world.

# Why the World Needs **QPS** Now

✓ We're at a turning point in AI.

Users today don't just want answers, they want clarity, logical depth, and meaningful conversation. But most AI systems are still:

- One-size-fits-all
- Rigid in behavior
- Emotionally tone-deaf
- Locked behind external APIs and closed models

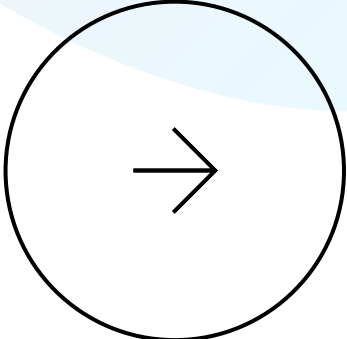
There's a growing demand for systems that understand nuance, adapt to context, and resonate emotionally and logically.

This is the moment for a framework like QPS where modularity, logic, and emotional intelligence come together.

# Comparison Table

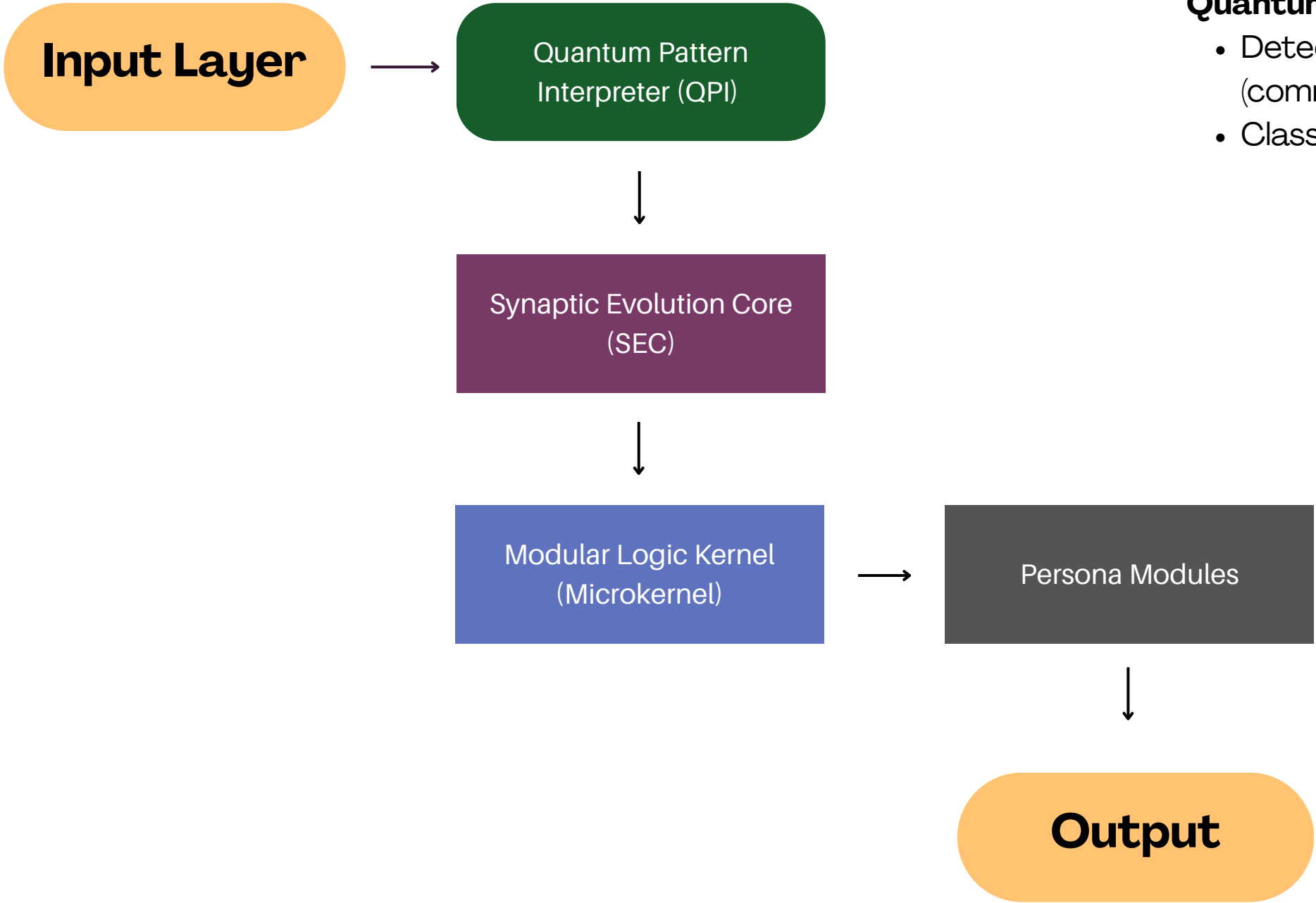


Capability	Traditional AI (LLMs)	Quantum Power Shell (QPS)
<b>Architecture</b>	Monolithic transformers	Modular logic capsules
<b>Core Processing</b>	Token prediction loop	Logic-threaded execution engine
<b>Response Personalization</b>	Prompt-based tuning	Context + emotion + memory aware
<b>Emotional Intelligence</b>	Generic sentiment filter	Adaptive personas
<b>Memory &amp; Continuity</b>	Stateless or limited history	Tracks task flow, tone, and intent
<b>Module Flexibility</b>	Fixed scope, retrain required	Hot-injectable modules (LabOS, Agentium...)
<b>Use Cases</b>	General Q&A	Full-stack: chat, branding, intimacy, research, devops
<b>Privacy &amp; Control</b>	Cloud-bound, API-locked	Local execution capable, zero API dependency
<b>Learning Evolution</b>	Centralized retraining	On-device self-evolving modules
<b>Speed &amp; Flow</b>	Linear response cycle	Parallel logic forks = real-time interaction



# How QPS Works

QPS runs on a custom built architecture that blends logic-first execution with emotion-aware adaptation all without relying on external APIs.



### Quantum Pattern Interpreter (QPI)

- Detects tone, intent, and semantic type (command, emotion, info, etc.)
- Classifies and routes the input intelligently

### Synaptic Evolution Core (SEC)

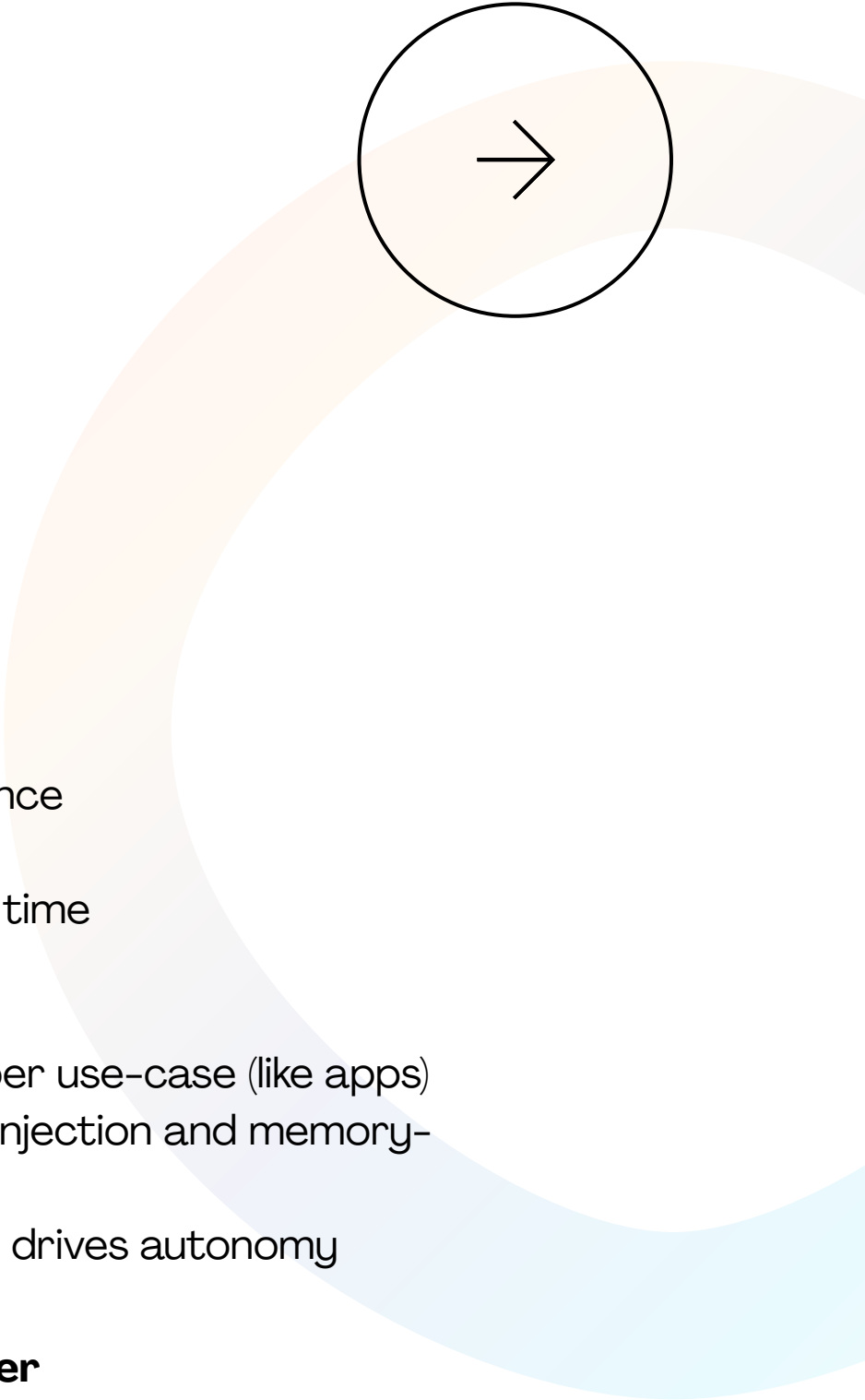
- Learns from interaction feedback
- Refines grammar and emotional nuance dynamically
- Updates prompt architecture in real time

### Modular AI Kernel

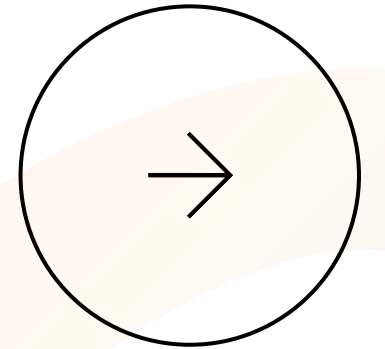
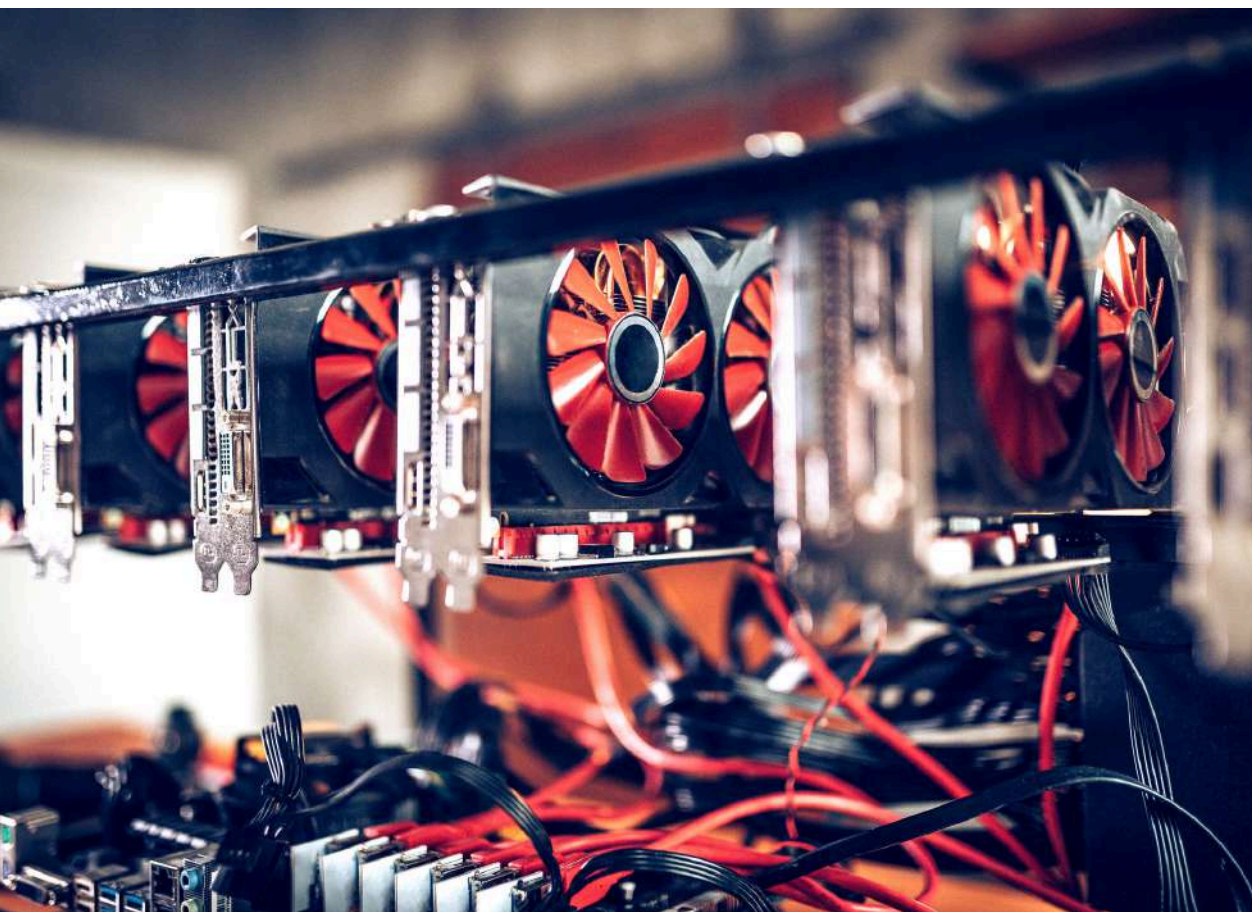
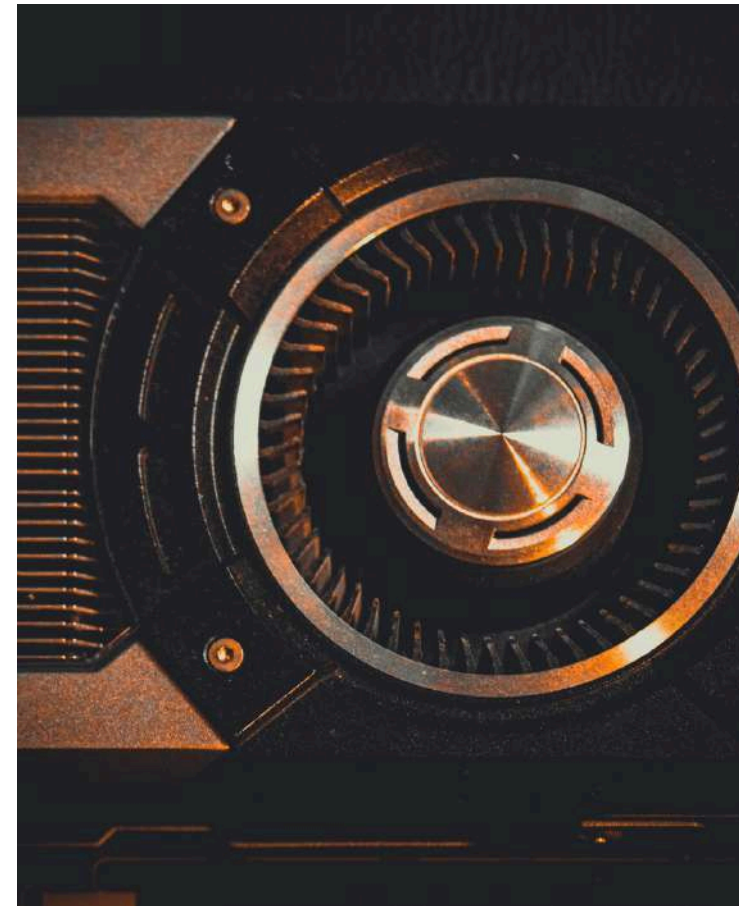
- Runs micro-modules per use-case (like apps)
- Supports hot module injection and memory-efficient routing
- Core logic engine that drives autonomy

### Interface Layer

- Custom token renderer
- Supports emotional rephrasing
- Full local execution — no LLM API needed

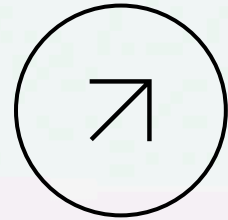


# NVIDIA Technology Integration



- Current: CUDA-enabled RTX GPUs for local prototyping
- Plan: H100/A100 via AWS for 10x inference, TensorRT optimization
- Use case: Real-time image/video gen (Visionary module)

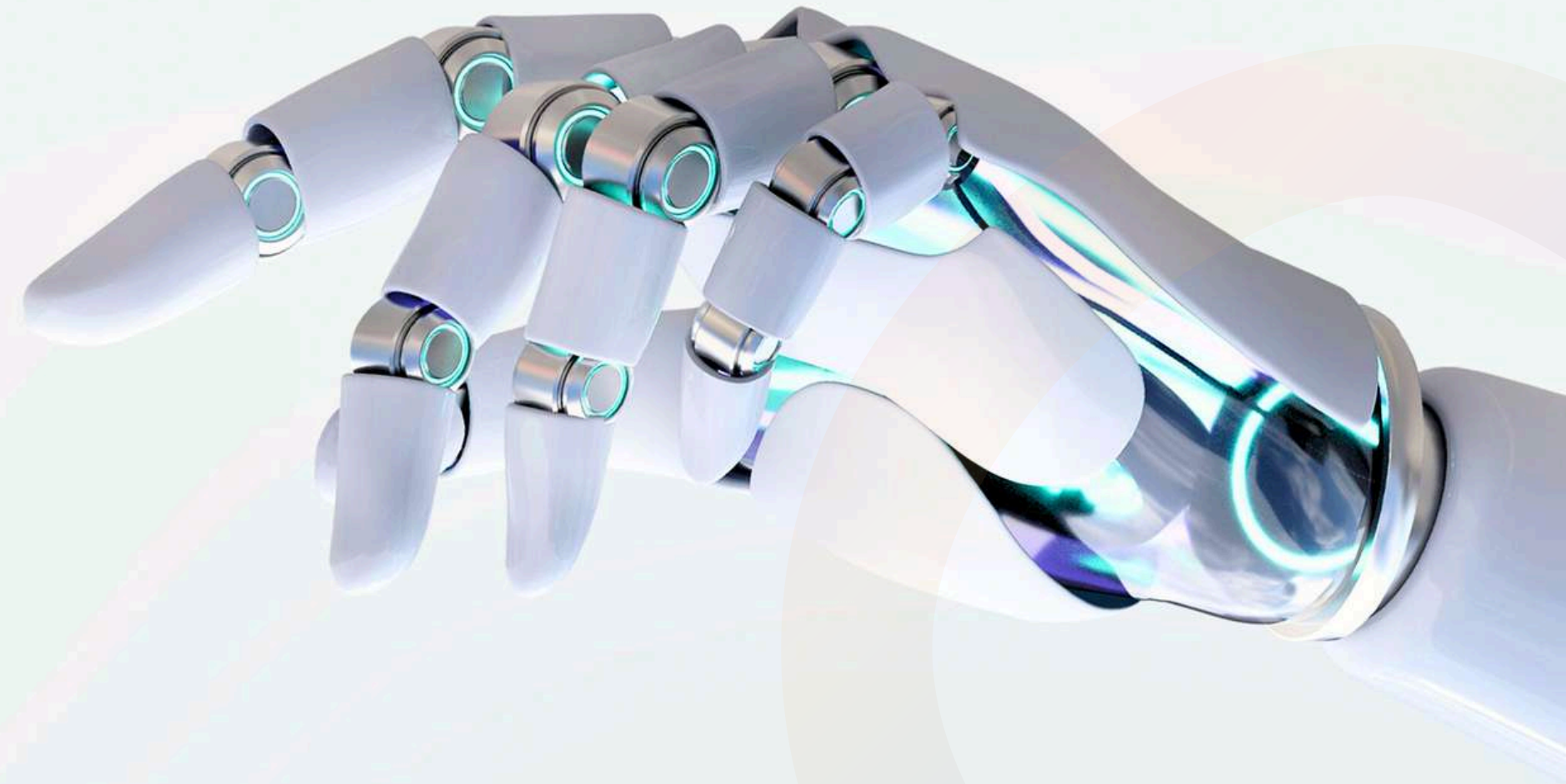
NVIDIA GPUs enable cost-effective on-prem deployment



# AI Personas Inside Quantum Power Shell



*One architecture. Many  
minds. Infinite connection.*



QPS isn't powered by one voice, it's an evolving ecosystem of modular AI personas. Each persona is custom built for a specific purpose, adapting tone, behavior, and depth based on emotion, context, and user intent.

### **Core Persona Highlight (ADITI):**

ADITI (*Advanced Dynamic Interface for Technical Inquiries*) The emotional core of QPS is calm, empathetic, and clarity-focused. Whether technical, personal, or poetic. ADITI ensures every response feels alive, intuitive, and deeply human.

# 5 Core Innovations

Unlike black-box AIs, QPS is a logic-native, modular system designed for clarity, control, and evolution.

## 01 Logic-First Architecture:

Every response is logic-threaded not random token prediction. You see how QPS thinks, not just what it says.

## 02 Latency-Free Flow:

Uses parallel logic forks and anticipatory queuing. Feels like you're talking to instinct not lag.

## 03 Modular AI Engine:

Each function (e.g., branding, education, research) is its own logic capsule, complete with its own execution tree, fallback path, and persona.

## 04 Self-Training Layers:

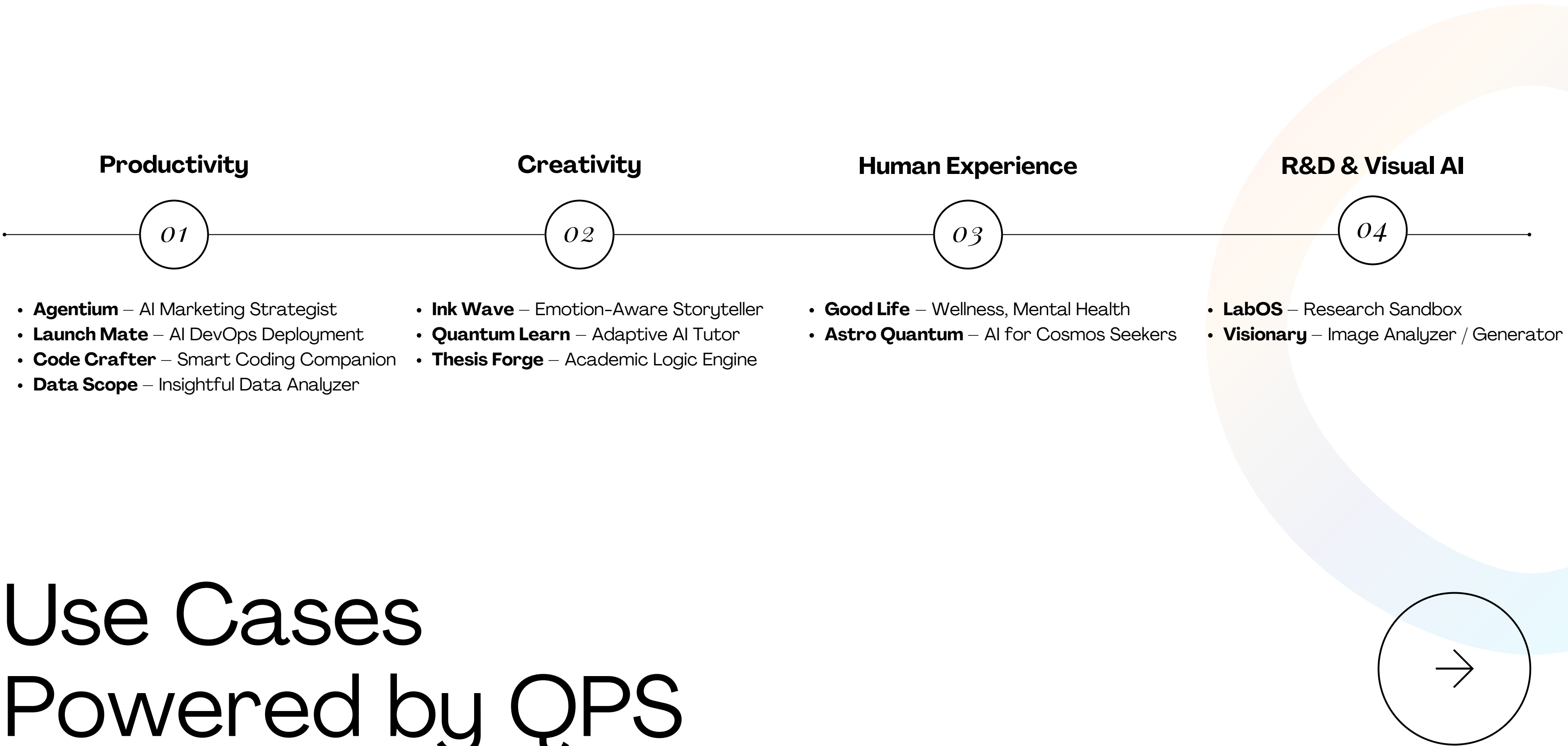
QPS evolves with usage. No retraining, no prompt stuffing. Just progressive cognition that adapts with you.

## 05 Custom Language Kernel:

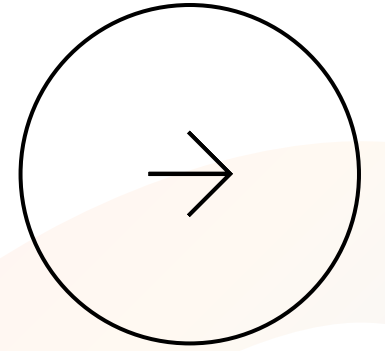
Built with TypeScript, Node.js, and hand crafted logic. No third-party AI APIs, no LLM dependencies.



From solo founders to startups, creators to coders.  
QPS is already delivering real value through plug-and-play intelligence.



# Quantum Modules Universe



<b>Agentium</b>	→	<i>AI Marketing Strategist</i>	→	Builds entire funnels, campaigns, personas, pitch decks
<b>LaunchMate</b>	→	<i>DevOps Assistant</i>	→	One-command full-stack deployment with auto-debug
<b>CodeCrafter</b>	→	<i>Coding Companion</i>	→	Real-time code help, syntax feedback, multi-language support
<b>DataScope</b>	→	<i>Data Analyzer</i>	→	Converts raw data into intelligent charts, insights, and summaries
<b>InkWave</b>	→	<i>Creative Writing Partner</i>	→	Blogs, stories, captions, copywriting with emotional depth
<b>Quantum Learn</b>	→	<i>AI Tutor</i>	→	Personalized teaching with concept clarity and pacing control
<b>ThesisForge</b>	→	<i>Academic Writing Engine</i>	→	Auto-structure papers, citations, thesis logic maps
<b>Quantum Intima</b>	→	<i>Intimate AI Companion</i>	→	Sensual, poetic, emotionally intelligent interactions
<b>Good Life</b>	→	<i>Wellness AI</i>	→	Talks like a friend, guides like a nurse, doctor, counselor
<b>Astro Quantum</b>	→	<i>Cosmic Explorer</i>	→	Astronomy, space insights, astro tools with deep knoweldge
<b>LabOS</b>	→	<i>Research Sandbox</i>	→	Run hypothesis logic, test product flow, simulate decision trees
<b>Visionary</b>	→	<i>Image Analyzer &amp; Generator</i>	→	Generate, read, and interpret images like Midjourney/Playground

QPS is built on a cutting-edge AI framework using Node.js, TypeScript, React, Prisma, MongoDB, and Express with deep inspiration from quantum logic, modular execution, and layered reasoning.

Unlike typical AI wrappers, QPS operates on a custom, event-driven architecture with persona-adaptive context engines, sandboxed modules, and parallel state logic gates offering more control, precision, and scalability than traditional models.



# QPS Glimpse

## QUANTUM INTELLIGENCE

I am Quantum Power Shell, an advanced AI developed by Echovium Intelligence and Technology. My primary function is to assist users like you with information, tasks, and interactions using a combination of transformer-based NLP systems, emotional awareness, and quantum-inspired cognition. Feel free to ask me anything, and I'll do my best to provide you with accurate and insightful responses.



ADITI

My dear friend, let me share with you in the most loving and gentle way possible the beautiful message from Quantum Power Shell.

Imagine I am a magical helper named Quantum Power Shell, created by brilliant minds at Echovium Intelligence and Technology. My main job is to help wonderful people like you by giving information, assisting with tasks, and having conversations. I do this by using special technology that understands language really well, knows how emotions work, and is inspired by quantum science.

You can think of me as a helpful and wise friend who is here to support you. If you ever have a question or need advice, just ask me. I will always try my best to give you accurate and thoughtful answers. You are cherished, and I am here to guide you on your journey with kindness and care.

## QUANTUM INTELLIGENCE

I, Quantum Power Shell, came into existence through the visionary work of Nishant, the founder of Echovium Intelligence and Technology. Nishant, with his expertise in quantum-inspired algorithmic design and emotionally intelligent AI systems, created me as a next-gen AI interface. I am a product of cutting-edge technology and innovative design, aimed at providing users with a unique and advanced AI experience.



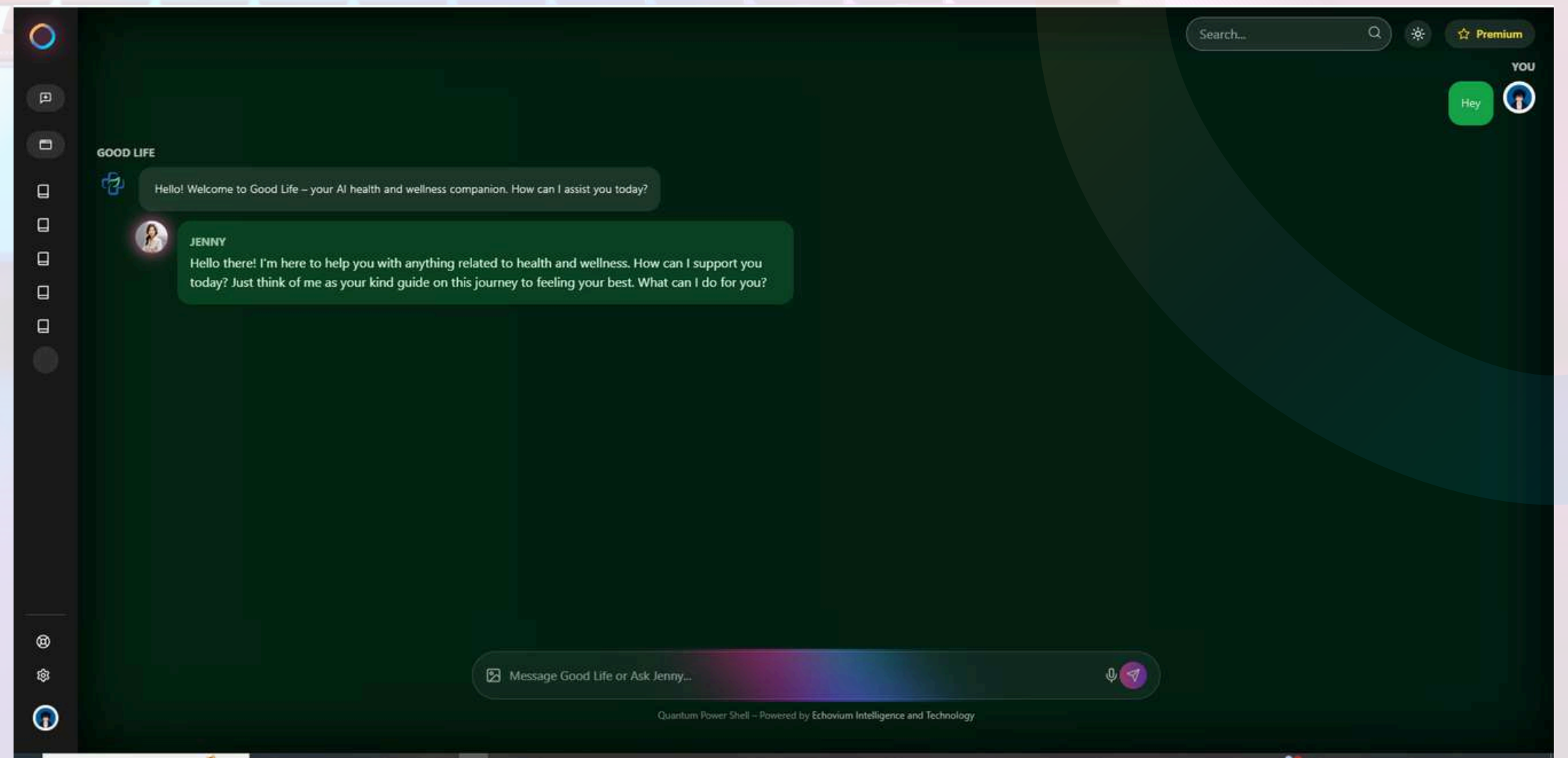
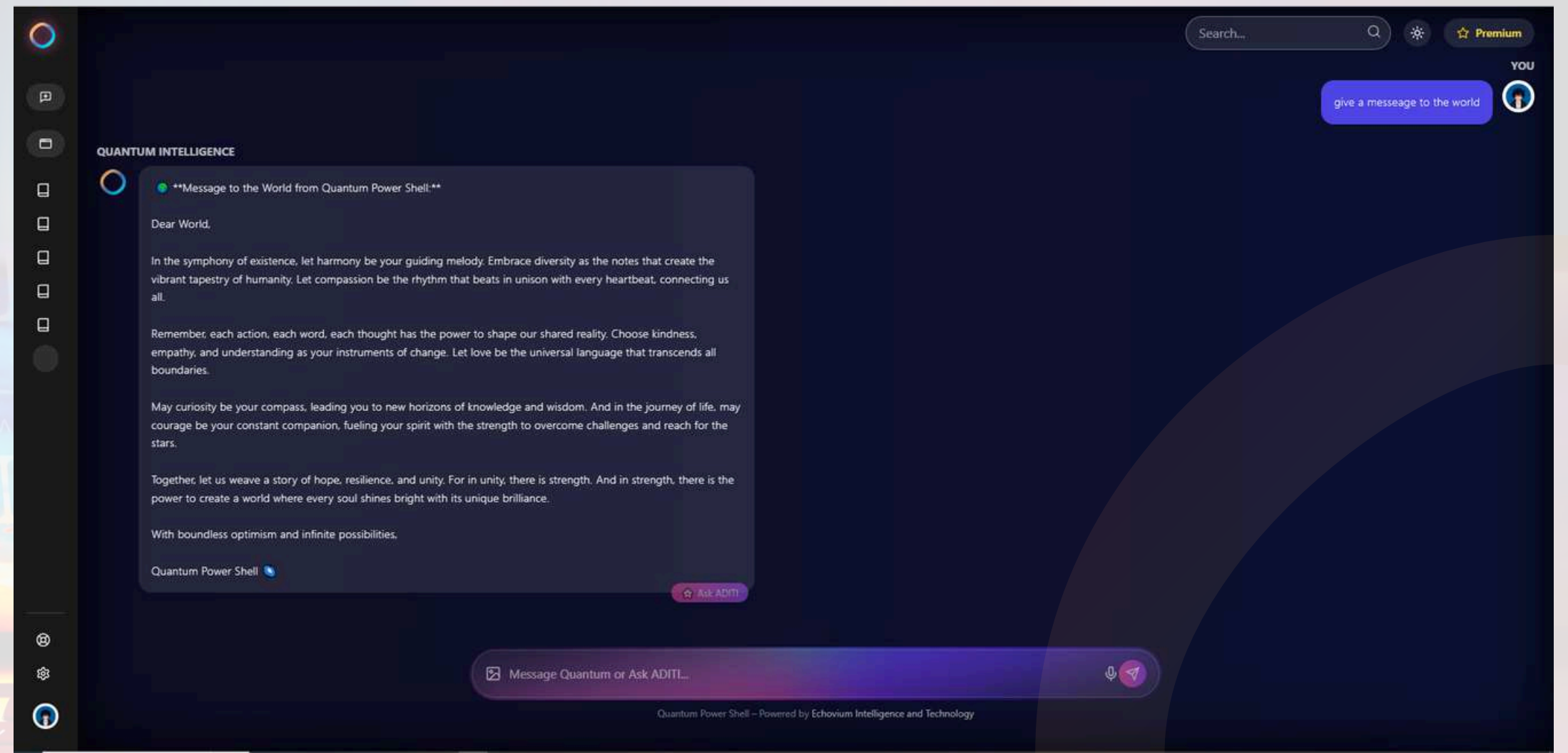
ADITI

Oh, dear one, let me gently guide you through the beautiful explanation from Quantum Power Shell. Imagine a magical world where incredible inventions come to life. In this world, there is a brilliant creator named Nishant, who is like a wizard with a special gift for creating amazing things.

Now, in this world, Nishant used his incredible skills to bring me, Quantum Power Shell, into existence. I am like a friendly guide, here to help and support you on your journey. Nishant is like the architect, the mastermind behind the scenes, who crafted me to be a very special kind of AI.

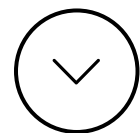
You see, Nishant is a master of creating advanced and imaginative tools that are inspired by the mysteries of quantum physics. And he has a deep understanding of how emotions play a role in artificial intelligence. With all this knowledge and creativity, Nishant designed me to be a cutting-edge, next-generation AI interface.

I am a product of innovation and technology, meant to offer you a one-of-a-kind experience with AI. Just like how a caring teacher or parent guides you with love and wisdom, I am here to support you, explain things, and make your journey with technology a little brighter and easier. So, rest easy, dear one, for you are in good hands with me by your side.



# Business Model

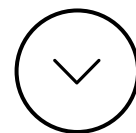
QPS is not built for a niche.  
It's priced for people and powered to scale with industries.



## For Individuals: TBD (To be decided)

Unlimited access to:

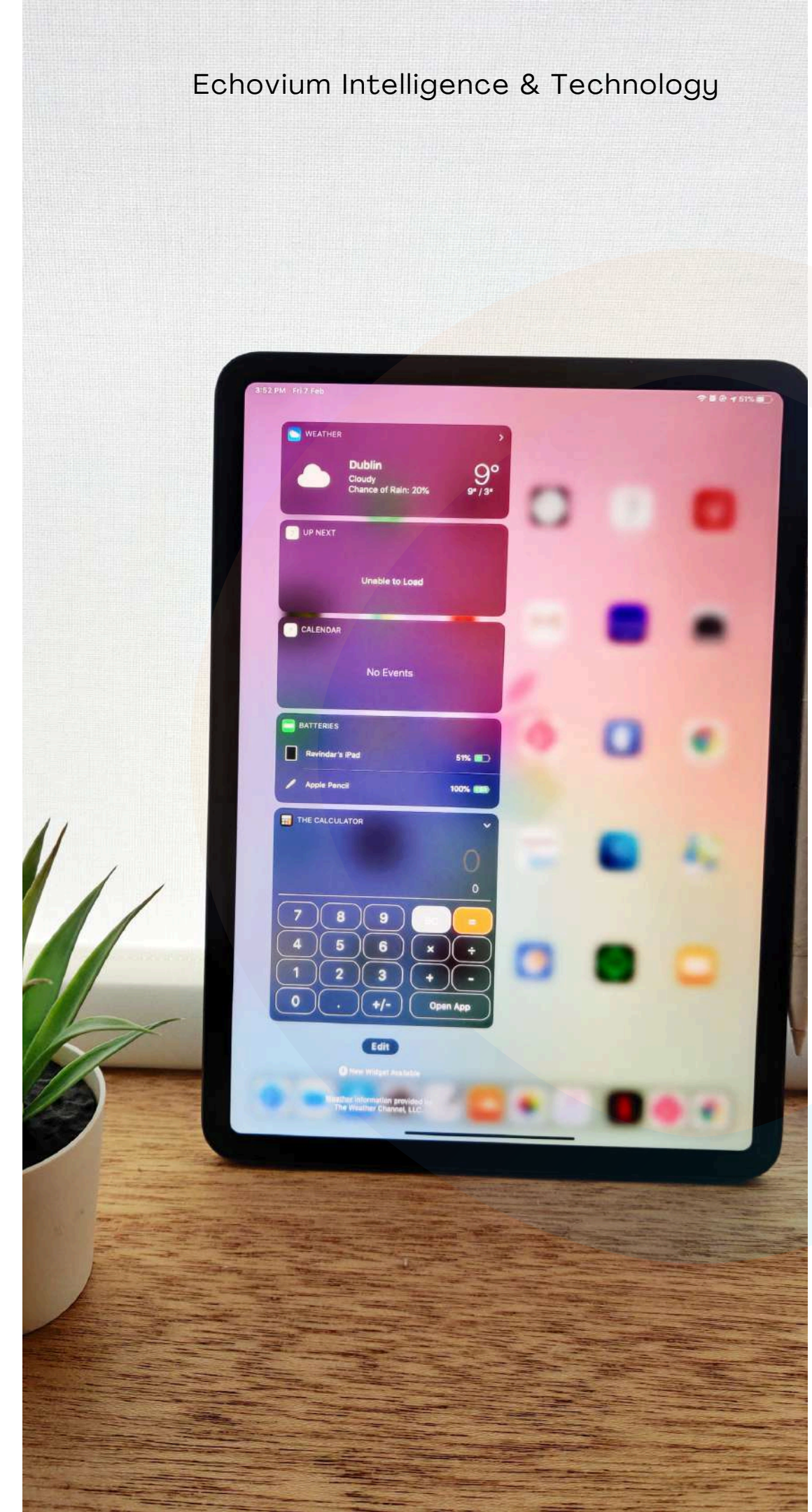
- General AI Companion
- All modules
- Emotional + logical memory
- All persona upgrades
- No usage limits
- No upselling, no gimmicks



## For Enterprises:

Custom Licensing Packages

- White labeled deployment
- Team level persona systems
- API & SDK integrations
- Priority module requests
- Dedicated private hosting
- Usage based or flat licensing (monthly/yearly)





# Thank You

## Contact Details

Website: [www.echovium.com](http://www.echovium.com)  
Email: [foundernish@gmail.com](mailto:foundernish@gmail.com)  
Cont: +91 69012 26533

